

# Accurately monitor water use with Automatic Meter Readers (AMR)



## Get real-time water insights with an Automatic Meter Reader (AMR)

An AMR device constantly monitors your water usage, taking a meter reading every 15 minutes. These readings are automatically transmitted to our Utility Manager online portal, providing access to data and insights at the click of a button.

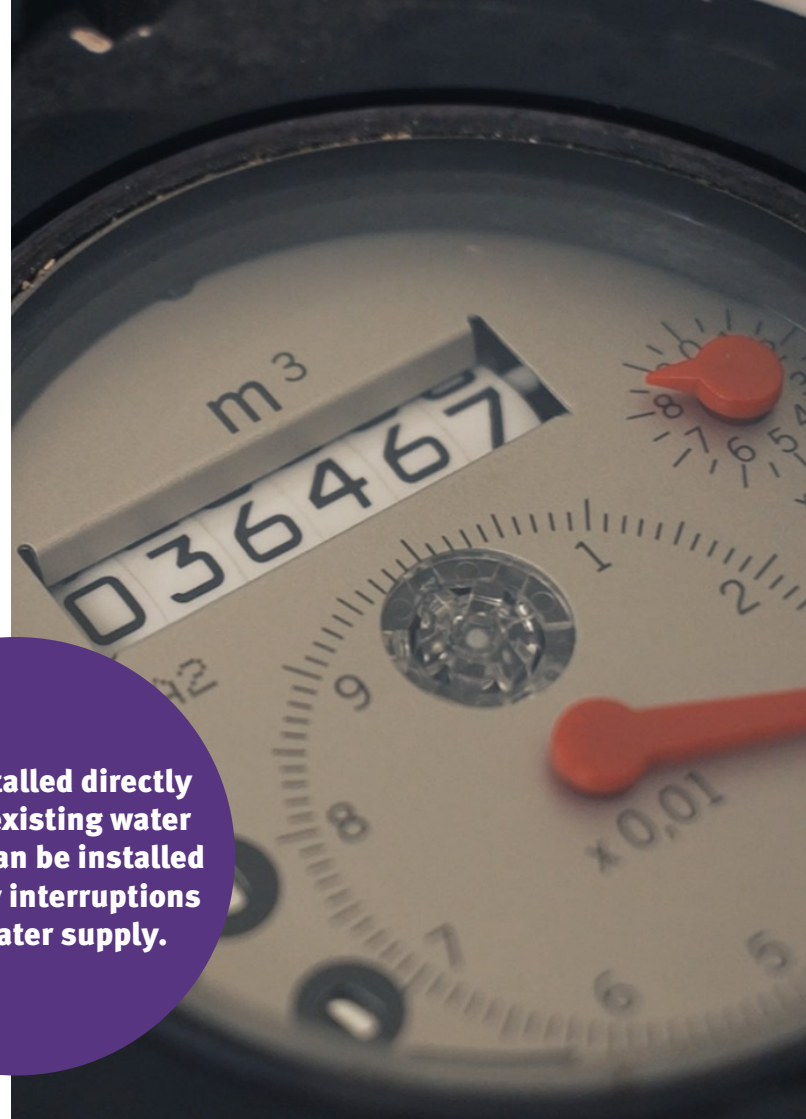
In a few simple steps, you can view your water usage data and consumption trends at both site and portfolio levels. Our team of experts also monitor your readings to track consumption identifying potential leaks and opportunities to improve your water efficiency and reduce costs.

As well as gaining access to near real-time usage data and expert insights, you don't need to submit manual meter reads\*. All AMR meter readings are automatically sent to us, your water retailer, ensuring you receive more accurate bills.

It's easy to get started. We'll support you throughout the installation process to ensure you get the most out of your AMR and the granular data it provides.

\*Our meter reading team will continue to read your meter twice per year to meet regulatory obligations.

**AMR is installed directly onto your existing water meter and can be installed without any interruptions to your water supply.**



## Benefits of AMR

By installing AMR, you'll:



**save time**, as you'll never need to read your water meter(s) or submit manual reads



**receive more accurate bills** as we'll have accurate meter reads to calculate your bills



**get access to detailed carbon reporting**, calculating how much carbon you produce based on your water usage



**get access to benchmarking data** to measure consumption at both sites and estate level, and against similar organisations



**track usage accurately**, with the functionality to set usage threshold alarms



**save money** by identifying higher usage sites where you can make water efficiencies, and



**have access to expert support** to review your usage data and identify leaks.



## When it comes to saving water and cutting costs, we're here to help.

Our water data analysts will track your usage, identifying areas for improvement, alerting you to potential leaks and even recommending any infrastructure changes that could help you save or reduce risk.

By working with us, you'll also get access to our Intelligent Water Management service which combines industry-leading technology with time-earned expertise to help you reduce water consumption and hit your financial and environmental targets.

We'll benchmark your water usage across your portfolio and against similarly sized sites and organisations, as well as against rateable value\* and meter sizes to highlight potential outliers and identify where best to focus efforts.

To find out more about IWM, get in touch with our team:



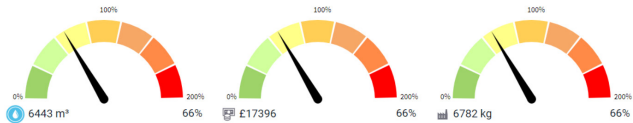
[solutions@business-stream.co.uk](mailto:solutions@business-stream.co.uk)

\*For sites in Scotland only.

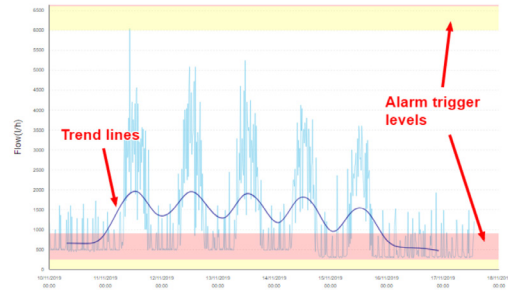
## Example AMR data

Through our Utility Manager AMR portal, you can view predicted annual water usage, costs and carbon emissions.

Predicted annual usage

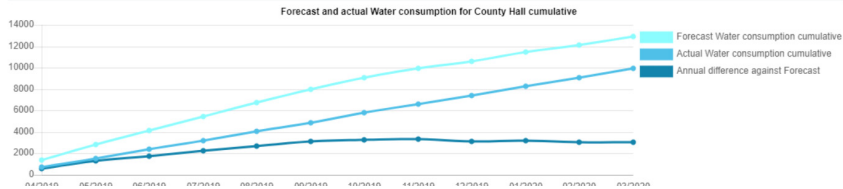


You can set up automatic email consumption alerts to define high/low usage tolerances.



You can set these forecasts against your actual consumption data to calculate the difference over the financial year

### Water consumption forecast and actual



“Having the AMRs in place at key sites, alongside the help from Business Stream’s expert team to monitor them, helps us determine if a spike is a leak or a change of practice at the site. This helps in managing our resources better.

Poul Wend Hansen  
Head of Sustainability | Scotrail

[Click to read our case studies](#)



## Think your business could benefit from AMR?

Find out more or get in touch:



[business-stream.co.uk/AMR](https://business-stream.co.uk/AMR)



[solutions@business-stream.co.uk](mailto:solutions@business-stream.co.uk)

**business stream**  
A SCOTTISH WATER COMPANY

